



Dear Families,

It's been another fantastic week at Swan Reach Primary School, filled with learning, laughter, and great moments across the school. This week, I had the chance to walk through the Prep/1 room multiple times and see the many learning areas students have been exploring. It was wonderful to watch their minds ticking over during Science as they investigated simple machines and learned how a pulley system works. The students are also absolutely loving the music program as they explore rhythm using boom whackers, and I'm fortunate enough to hear them honing their skills even when I'm sitting in my office!

Mrs Lewis also held an information afternoon for families about the Literacy program in the Prep/1 room. It was terrific to see such a strong turnout of parents, all invested in supporting their child's learning. Thank you to everyone who came along and engaged so positively.

NAPLAN has gotten off to a terrific start. Students completed the Writing assessment on Wednesday smoothly and confidently, and it was great to see the creativity and skill on display in their responses. Students have since completed the Reading and Language Conventions sections, leaving only Numeracy to finish on Monday. I'm proud of the way all students have approached the tests, giving their best effort and showing a really positive and enthusiastic attitude throughout the whole experience.

As of next week, I will be away on leave, travelling with my family, and I will return at the beginning of Term 2. It has been an absolute pleasure to serve in the Acting Principal role for Term 1. I have learned a great deal and gained an even deeper appreciation of our staff, students, and broader community. Thank you for your ongoing support during this time, and I wish everyone a wonderful end to the term and a joyful holiday period ahead.



*Travis Jorgensen Acting Principal*

## TERM 1 2026

*Diary Dates to Remember*

### March

- Peer Connect Group - 16th
- Shire Library Bus - 19th
- Buchan X-Country - 20th
- Peer Connect Group - 23rd
- Naplan Complete - 23rd

### April

- Shire Library Bus - 2nd
- Last day of Term - 2nd
- Good Friday Public Holiday - 3rd
- Student Free Day - 20th
- Students Return to School - 21st
- Shire Library Bus - 30th

**RESPECT & EMPATHY  
FOR ALL**

21 School Road, Swan Reach  
[swan.reach.ps@education.vic.gov.au](mailto:swan.reach.ps@education.vic.gov.au)

 [swanreachps.vic.edu.au](http://swanreachps.vic.edu.au)

03 5156 4287



## Student of the Week Awards



### Tuesday 10th

Ethan who very enthusiastically cleaning up our classroom last week on Friday.

Lottie for Improving in every area of her learning.  
Imlay for your dedication to learning in all areas and for consistently modelling our classroom learning expectations.

Ciaran for your dedication to learning in all areas and for consistently modelling our classroom learning expectations.



**Swan Reach Primary School** **PICNIC POINT FARM**

Swan Reach Primary School are proud to partner with the Picnic Point Farm to make their delicious and fresh produce available to you on a weekly basis. Orders are due Monday evening, and produce will be available for collection on Thursday afternoon and Friday Morning.

Use the website <https://www.picnicpointfarm.com.au/catering/fundraising> or the below barcode, or return the slip with cash to the office red box by Monday afternoon.

All monies raised will go towards supporting the Cooking Program.

Dates for Term 1 are as follows:

Order date:  
Monday 2<sup>nd</sup> March  
Monday 9<sup>th</sup> March (Labour day public holiday, please order online)  
**No orders week of 16<sup>th</sup> March**  
Monday 22<sup>nd</sup> March  
Monday 30<sup>th</sup> March

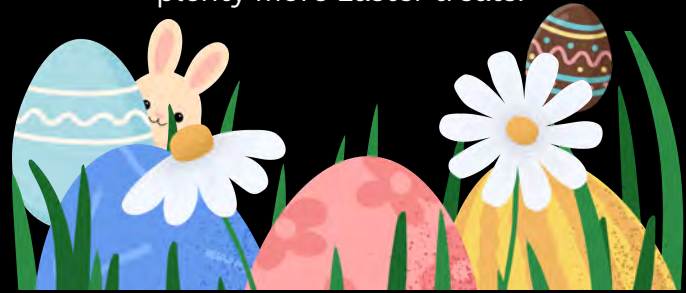


Please contact [health.williams@education.vic.gov.au](mailto:health.williams@education.vic.gov.au) if you have any questions

## Things to Remember



Don't forget we are looking for donations for the Easter Raffle. Tubs have been placed in the office, thank you so much for what has been received so far, but there is still room plenty more Easter treats.



**School Assembly will be held every Monday at 9am families welcome.**

### Is your child's photo's in the Newsletter?

We are only able to display photo's in the newsletter of students where parents or carers have given us permission to do so. If you would like to withdraw or change your consent at any time please notify the school & fill out any required paper work. Forms are available at the front office.



**uEducateus**  
Parental app

**Facebook**  
Follow us on facebook



## This Week from the year 6 Room

Featuring Mr J, Mrs Blackwell & Liz

*Big Smiles, Big Energy, Big Start!*



Our Year 6 class has had a terrific start to the school year, quickly building strong relationships and a great classroom culture. One of our weekly highlights has been our “Laps Around Australia” challenge. Students worked in groups with trundle wheels, measuring the school grounds, recording distances, comparing results, and averaging their findings. Through lots of teamwork and discussion, they discovered that 4 laps of the school—or 11 laps of the basketball court on wet days—equal 1 km.

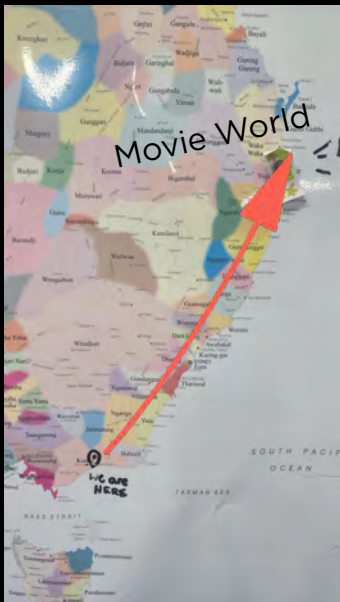
We’re now using a large map of Australia to track our journey to the Gold Coast, where a Movie World celebration (complete with a movie and popcorn!) awaits us once we “arrive.” After covering approx.

100 km, students were asked to research where our first overnight stop would be and Dargo was selected. India even calculated the cost for our whole group to stay there—hotel versus tent camping!

This mini project has blended maths, geography, fitness, cross-country practice, and teamwork beautifully. Alongside this, students have also been completing literacy and numeracy assessments to help us plan for their individual learning needs and growth. We’re exploring narrative and persuasive writing, and in math focusing on whole-number place value, fraction equivalence, and problem-solving.

We are extremely proud of the enthusiasm and energy Year 6 brings to everything they do. Meanwhile..... our current tally is 152.34 km. Where might we be staying overnight now? Stay tuned as our journey continues.....

ANY SUGGESTIONS MOST WELCOME!





Buchan Primary School are running a BBQ fundraiser for the Cross Country Friday 20<sup>th</sup> of March. Details below.

# **BBOQ**

## **FUNDRAISER CROSS COUNTRY**

*Hosted by* **BUCHAN PRIMARY  
SCHOOL**

**FRIDAY  
MARCH  
20**

 **BUCHAN CAVES  
RESERVE  
BBQ ON FROM:  
11:00AM - 1:00PM**

**PRICES**  
**SAUSAGE IN BREAD - \$3**  
**BURGER - \$8**  
**VEGETARIAN BURGER - \$8**  
**CAKES / SLICES - \$3**





# Special Feature

## Marley Point Overnight Yacht Race

Every year trailable yachts congregate on the Gippsland Lakes for the annual Marley Point Overnight Yacht Race. This year 114 boats entered and the best news was, 14 junior (under 18) sailors participated! Two of which were students from Swan Reach!

The race started at 7pm, heading across Lake Wellington to the McLennan Straits, onto Hollands Landing, down Lake Victoria passed Loch Sport and onto Paynesville. This year all boats were over the finish line before 10am so it was great to celebrate at the presentation at 3pm.

It was fantastic to be out on the water with the family and I highly recommend anyone who has thought about it, look into it and join the 2027 race! Some words from our juniors.....



had a great time for my first sailing race. We came second out of 111 boats, I can't believe we came second. It was brilliant. I wish we could do it all the time but dad says it is once a year. I had a good sleep over night and I liked when I got to steer.

By Dylan

For my first time entering the Marley Point race, it was pretty good, but the wind wasn't very strong. I tried to stay up late but I got very tired and went to bed in the McLennan Straits and woke up at Point Turner near Paynesville. I steered us across the finish line at 4.11am. In the morning we went to the presentation. We got a silver medal and Dylan and I went up to get it.

By Chelsea





**SWAN REACH  
PRIMARY SCHOOL**

**NEWSLETTER**

# This Week Around the Playground



**RESPECT & EMPATHY  
FOR ALL**

21 School Road, Swan Reach  
[swan.reach.ps@education.vic.gov.au](mailto:swan.reach.ps@education.vic.gov.au)

 [swanreachps.vic.edu.au](http://swanreachps.vic.edu.au)

03 5156 4287



## This Week from Kitchen Garden Featuring Mrs Morton & our Amazing Volunteers



Kitchen Garden Newsletter  
Friday 13 March 2026

We were very excited to welcome the prep students to the kitchen this week as they joined their grade 1 classmates for the first time in a kitchen session. They were very confident when making the grissini (little bread sticks) which they accompanied with tzatziki dip made with the cucumbers from our garden.

Grade 2/3 have been making some delicious pizzas using silver beet from the garden. We also made some small, stuffed zucchini with tomato, ham and herbs which were thoroughly enjoyed. While the grade 2/3 students have some great skills, at their growing ability levels it is important that the cooking groups are small so that the adult can supervise and help each student be safe and successful. We are very short of adult helpers with this group who are in the kitchen every second Wednesday from 9-11am. If you can help with this group, or any of our Kitchen Garden sessions, we would love to hear from you. A current Working with Children check is required and can be applied for online. If you don't need one for your employment a Volunteer's check is adequate and is free. <https://service.vic.gov.au/services/working-with-children>

Over the last couple of weeks our grade 3/4s have been using a lot of our zucchini making a zucchini and bocconcini pizza and small stuffed zucchini. A delicious apple turnover was also made with apples from the garden.


Thank you to our volunteers and classroom helpers. Your support is vital to the success of the program.

*Lorraine Morton*





**Swan Reach Primary School**  
 No: 1631  
 21 School Rd,  
 Swan Reach VIC 3903  
 Ph: (03) 5156 4287  
 Email: swan.reach.ps@education.vic.gov.au  
 ABN: 22 251 671 492  
 Acting Principal: Mr. Travis Jorgensen



**School Pick-up and Drop-off**  
 Keeping students safe and traffic moving smoothly each day.

**Morning Drop-Off**

- Keep the **bus zone** out the front of the office clear at all times.
- Leave the space **directly behind the bus** park clear so the bus can safely pull in and be fully off the road.
- The **kiss-and-drop** zone may be used for **brief stopping and exiting** of vehicles in the morning (traffic is lighter and arrivals are more gradual).

**Afternoon Pick-Up**

- The **kiss-and-drop** section along the basketball court is for **quick pick-ups only** - please do not park and leave your vehicle.
- The **only reason** to exit your vehicle during pick-up is to ensure your child is **safely buckled in**. Please **do not** get out and approach the gate.
- Please follow the queue and avoid jumping the line to park behind the bus zone. When everyone follows the process, the line moves quickly and students are collected efficiently.


**Parking to Collect Your Child**

- If you need to get out of your car to collect your child or speak with a teacher, please park on the **opposite side of the road** or down the bottom near the **rebound wall**.
- It is permissible to park in the **designated bus zone after 3:30 pm**.


**NEW:** Parent collection area inside the school grounds (access via the smaller personal access gate near the bus zone). This keeps adults off the roadside and helps staff ensure students are collected by the correct adult.

Please drive slowly and watch for pedestrians at all times. If you have any questions, contact the school office.


**Swan Reach Primary School**  
 No: 1631  
 21 School Rd,  
 Swan Reach VIC 3903  
 Ph: (03) 5156 4287  
 Email: swan.reach.ps@education.vic.gov.au  
 ABN: 22 251 671 492  
 Acting Principal: Mr. Travis Jorgensen



**Parents who have parked to collect their children will need to congregate in this area. Staff will then direct students down to parents.**



**The bus zone can be used for parking only AFTER 3:30pm. This will help to reduce congestion further down the road.**



*Happy Birthdays*

**MARCH**

Tyler  
 Aiden.S  
 Mason




This smart watch was found in the playground. If it belongs to you, please enquire at the office. A gentle reminder that it is against school policy to bring technological devices to school. More information is coming about this soon.



## This Weeks Community News



### ARE YOU AN EMERGENCY SERVICE RESPONDER IN RURAL AUSTRALIA?



**SEEKING VOLUNTEERS** willing to share their experiences and perspectives in relation to planning for perinatal women and their families during and after natural disasters.

**Eligibility:**  
- Emergency management responders (in paid or volunteer roles) e.g. CFA, SES, paramedics, Red Cross, health professionals, people working in evacuation centres support, local government planners and so on) who have been involved in natural disaster responses in the past 5 years in rural Australia.

The findings from this research will help to create preparedness, relief and recovery plans that benefit rural communities.

**A \$50 voucher** will be provided to each participant as a contribution for your time and knowledge.

**IF YOU ARE INTERESTED, PLEASE CONTACT**

Xiangmin Tan  
PhD Candidate  
Monash Rural Health  
T: +61 493979000  
E: Xiangmin.Tan@monash.edu



### HAS YOUR YOUNG FAMILY LIVED THROUGH A NATURAL DISASTER?




**SEEKING VOLUNTEERS** to share their experiences and needs during natural disasters.

**Eligibility: Mothers** who have:  
- experienced mental health challenges before pregnancy,  
- experienced a natural disaster during your pregnancy period or first year after the birth of your child  
- live in rural Australia

**Partners and family members** are also invited.

The findings from this research will help to create preparedness, relief and recovery plans that considers the needs of you and your family.

**A \$50 voucher** will be provided to each participant as a contribution for your time and knowledge.

**IF YOU ARE INTERESTED, PLEASE CONTACT**

Xiangmin Tan  
PhD Candidate  
Monash Rural Health  
T: +61 493979000  
E: Xiangmin.Tan@monash.edu



### 14<sup>th</sup> March 2026

Open 9am to 4pm at the Great Lakes Air Field Colquhoun Rd Lakes Entrance

**Entry \$5 - Per Person or \$10 Per Vehicle**  
**TRUCKS CONVOY FROM TRARALGON & DRBOST TO LAKES ENTRANCE**  
Trucks Expected to arrive at 11am  
Truck Entry is Free  
CONVOY START TIME TRARALGON 7:30AM & - DRBOST 9AM

All Trucks Welcome - Show 'N' Shine - Charity Auction  
Food Trucks - Merchandise Stalls - Family Fun Day - Truck'n With Tim  
**ALL PROCEEDS DONATED TO CAMP QUALITY & ANGEL FLIGHT**  
This Event is Alcohol Free.

CONTACT DETAILS/ Chelsea: 0455 531 991 Chris: 0418 804 508  
Email: egconvoyforkids@gmail.com / Facebook: East Gippsland Convoy For Kids

### PLAYERS WANTED!



Lakes Entrance  
Netball Association

**Net Set Go**  
Mondays 4-5pm

**Under 13s & Under 11s**  
Mondays 5-6pm

Registrations:  
<https://registration.netballconnect.com/login>



### SNAAP


SPECIAL NEEDS AQUATIC AWARENESS PROGRAM

LSV is running our special SNAAP aquatic & water safety program for people of any age & ability

Surf Life Saving Lakes Entrance, March 22<sup>nd</sup> 11am-1pm

Come on down to learn about key water safety messages and get hands on experience by our award life boats

Sign up now!



Proudly supported by LSV Gippsland Sporting Hub Project, made possible by the Victorian Government's Strengthening Regional Community Sport Program.

