



# Newmerella Primary School

*Learning Excellence Caring Honesty*



Address: McLaughlin's Road, Newmerella, VIC, 3886

Telephone: (03) 5154 1620

Email: [newmerella.ps@education.vic.gov.au](mailto:newmerella.ps@education.vic.gov.au)

Website: <https://www.newmerellaps.vic.edu.au>



## Principal Report – Sarah Walker

Wuman Njinde Parents, Students and the School Community,

Welcome to this fortnight's newsletter where we share Newmerella's school journey and achievements.

**School Council 2026:** Our parent and community member representatives take responsibility for the governance of the school, monitoring the overall direction, financial decisions and buildings and grounds of the school. The school would like to welcome Megan Sage who is a new parent representative on school council, and we look forward to working with Megan throughout the year. We still have parent vacancies for council, and we would greatly welcome new parents on school council. If you require someone to look after your children whilst you are at council, we can arrange for them to do so some activities at school to keep them occupied during the short duration you are here.

I would like to extend a special thank you to Kalina M who stepped aside this year from her role as school councillor and finance committee member. Thank you for the collaboration and support and leading by example when the school needed your help and assistance.

**Student Teacher:** Next week we welcome Shannon Bryne who is taking her placement rounds at the school starting next week for 15 days. Shannon is completing her teaching degree at RMIT and will be working in the Grade 4/5/6 Class with Janet.

**Pick Up/Drop Off:** Staff have been appreciative of parents and visitors following the signage for parking, as well as dropping and picking up passengers in the designated areas at the front of the school. This has ensured that the traffic flow during school times is not congested, and pedestrian safety is not compromised. The Shire put in a grant for a 'Wombat Crossing' for our school and several schools in our area and these submissions were knocked back by the TAC. So, going forward we are hopeful that they will try again for the next round of grants. We would also like to thank you for keeping us informed and up to date of changes regarding any late and/or early pick-ups. This has a flow on effect as it relates to school meetings etc and we can adjust our schedules and/or supervision accordingly.

**KESO - Ben Rotherham:** Ben is our designated Koorie Engagement Support Officer for our First Nations students and he will be coming to the school each Wednesday for a couple of hours

## Welcome

Welcome to Newmerella PS 'Valley of Plenty', we acknowledge the ones that come before us and thank the people that teach and share the stories of the past. We acknowledge the Gunai Kurnai elders past, present and emerging and extend our respect to Aboriginal and Torres Strait Islanders students and families.

## Important Dates

### Assembly

22nd May at 3pm

### School Council 5:30pm

15th June

20th July

10th August

12th October

### Marc Van

12th, 26th May

### Last Day of Term 2

Friday 26th June

### First day back for term 3

Monday 13th July

to participate in classroom activities, as well as implement inclusiveness into the curriculum via artwork, yarning circle (whole school) and extracurricular activities that promote cultural perspectives based on inclusiveness. Ben visited the school last week and held a yarning circle with our First Nation students to put the faces to the names, as well as introduce himself to the whole school prior to coming into the classrooms next week to work with all of our students.

**Far East Network Meeting Host School:** Today, we had principals, acting principals and assistant principals from our network of schools visit our school today. We discussed the Victorian Teaching and Learning Model 2.0 and how this was implemented in our schools, as well as an overview of work in each school, along with planning for the Writer's Showcase, Naloo Games and classroom observations with a walk through focus on 'Positive Fundamental Regard' and looking at how staff reinforce prosocial behaviours via positive feedback, predictable routines and classroom structures and staff body language and presence in the classrooms.

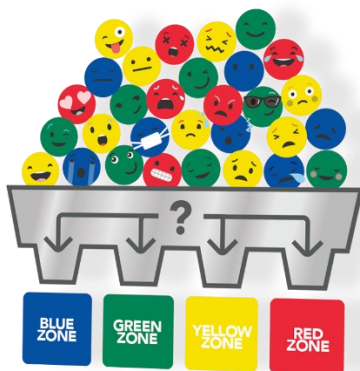
**Student Attitudes to Schools Survey:** This is applicable to students in Grades 4, 5 and 6 and the school has set aside a 2 week time frame for the 20 minute approx. survey to be completed. The school and DET at local and state level review this data as it relates to student engagement and wellbeing and they use the data from these results to track the school's journey. This data also provides the students with student voice and learning agency too.

**Athletics Sports Day:** Please refer to Compass for information relating to this event which is occurring tomorrow at Orbost Community College.

**Semester 2 Term 3 Enrolments:** If your circumstances have changed and you are considering enrolling at another school in our area, you can enrol your child at the end of Term 2 so your child can start at their new school in Term 3. Would you please notify the office as soon as possible so that we can update our records and transfer any relevant information to your child's new school if this is applicable with you. Likewise, if you know of any families who would like to enrol their child at our school, please ask them to contact the school.

**Zones of Regulation:** Feelings are complicated. They come in different sizes, intensities, and levels of energy that are unique within our brains and bodies. To make them easier to talk about, think about, and regulate, The Zones of Regulation organizes our feelings, states of alertness, and energy levels into four coloured Zones - Blue, Green, Yellow, and Red.

The school is implementing this as part of the RRRR (Rights, Resiliency and Respectful Relationships) curriculum in the junior classrooms. The Zones of Regulation framework and curriculum was developed from foundational research and practices in the fields of social-emotional learning, neuroscience, and developmental psychology.



**Asking For Help:** As part of the RRRR program, students are continually developing essential skills in recognising when to ask for help—particularly during unstructured times like recess and lunch. Playground situations can sometimes be tricky, and children don't always know what to do. We are equipping our students with strategies to assist with help-seeking. At home, you can help by encouraging your child to talk about their day and asking questions like: "What did you do when that happened?" or "Who could you talk to next time?" By working together, we're giving children the tools to stay safe, speak up, and support their peers with kindness, caring and empathy.

**2026 Grade 6 and Whole School Yearbook:** This year staff will be taking lots of photos of special events and memories which will then be collated into a whole school 2026 yearbook with a special section for Grade 6 students. Parents will be able to purchase a yearbook towards the end of Term 4. Ms Munn will be coordinating and overseeing the compilation of the yearbook. We will let you know closer to the end of the year regarding pricing.

**Cadbury Chocolate/ Lolly Fundraiser:** Thank you for supporting this fundraiser in Term 1. The school raised a profit of \$741.00.

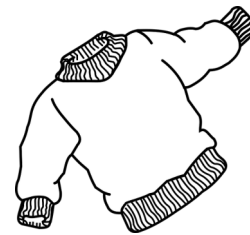
**Industrial Action Update - Australian Education Union (AEU):** Ongoing negotiations between the Department of Education and the AEU, the union representing teachers and school staff are continuing. At this stage, it is important to note that a formal offer has not yet been put to union members for consideration. While media reports have referenced proposed salary increases, they do not always reflect the full scope of negotiations which also include working conditions. We will continue to keep families informed as more confirmed information becomes available and provide you with information on how this will impact our school community. Thank you for your ongoing support.

**Bates Family Foundation:** The school received a \$5,000 donation from the Bates Family and this money will go towards classroom resources to support the curriculum implementation.

The federal government does not provide any funding for buildings and infrastructure in public schools, while delivering billions of dollars to private schools. It is unacceptable. The AEU nationally is campaigning to fix this, and your school can add your weight to the effort – please see the item below to find out how to [tell your school's story](#) of unmet need.

### **MISSING SCHOOL JUMPERS**

There are a number of parents that are looking lost for school jumpers which have their child's name on them. Can all parents please check to see if they have the right jumpers and if not return them to school so we can send them home to the rightful owners.



Congratulation to everyone  
below for attendance of 95-100%.





# Newmerella Primary School

*Learning Excellence Caring Honesty*



## **ENROLMENTS:**

How to enrol your child in Foundation (Prep): Starting primary school is an exciting time for you and your child. If your child is turning 5 years old by 30 April 2027, they are eligible to start school in 2027. Schooling is compulsory once your child turns 6 years old.

In Victoria, every child has the right to attend their designated neighbourhood government school (your 'local school'), as set out in the [Education and Training Reform Act 2006](#).

The Victorian government supports school choice. This means that you can apply to schools other than your local school. Schools will consider your application in line with the department's Placement Policy and offer enrolment if there are available places. The department's Placement Policy does not apply to schools with specific entry criteria, including specialist schools and English language schools.

This information pack outlines **when and how to enrol** your child in Foundation at a government primary school for the 2027 school year and guides you through the process.

If you wish for your child to attend a non-government school (Catholic or independent), please contact the schools directly for their enrolment processes. For information about enrolling in a government specialist school, please visit: [vic.gov.au/how-choose-school-and-enrol](http://vic.gov.au/how-choose-school-and-enrol).

## What you need to do

### **Find your local school**

Visit [www.findmyschool.vic.gov.au](http://www.findmyschool.vic.gov.au) to find your local government primary school or nearby schools.

### **Contact the school**

Contact the primary school to book an optional school tour. **Newmerella Primary School will be using the online enrolment (VicStudents)**. This information will be available through the school's website too.

### **Submit your enrolment application**

Submit an enrolment application **by Friday 31 July 2026**, either online via VicStudents or using the paper-based application form, depending on the school's process. For schools using the paper-based process, the application form is available at the end of this pack.

### **Receive and choose to accept an outcome**

You will be notified of the outcome of your application via email **between Monday 3 August and Friday 14 August 2026**. If you receive an offer, you should accept the offer by **Friday 28 August 2026**.

### **Prepare for your child's transition to school**

Take part in student **transition sessions during Term 4, 2026**, which will be organised by the school. Your child will start Foundation on **Thursday 28 January 2027**. For further information, visit: <http://www.vic.gov.au/transition-school-resources-families>.



# Newmerella Primary School

*Learning Excellence Caring Honesty*

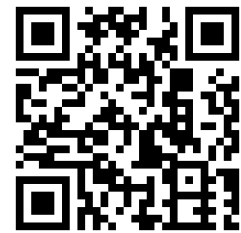


## **Compass**

Just a reminder that Compass is our first point of call with regards to communication. If you are unable to access this, please speak to office admin.

## **QR Code**

This is our QR code that goes directly to our website. It will be on the front page of the newsletters from now on.



# SWIMMING





# Newmerella Primary School

*Learning Excellence Caring Honesty*



## **Student of the Week Awards**

The winners for the fortnight were:  
Charlotte, Tek and Bobby (absent)



## **Positive Behaviour Raffle**

Students who are displaying positive behaviours that are aligned to our school values which are LEARNING, HONESTY, EXCELLENCE AND CARING in the classroom and/or in the yard can receive a raffle ticket. The winner's were Hudson, Troy and Nevaeh.



## **Specialist Subjects Awards**

Students that display a positive attitude to their specialist subjects for the fortnight were: Dance: Charlotte, Humanities, Troy Art and sport.



## **Reading Raffle Awards**

To be eligible for the weekly reading raffle, students must read 5 out of 7 nights. The winners for the fortnight were: Charlotte, Hudson, Rory, Lily and William.



## **Curriculum Days**

Monday 24<sup>th</sup> Aug and Monday 2<sup>nd</sup> Nov.

## **School Holidays**

Term 2: Sat 27<sup>th</sup> June to Sunday 12<sup>th</sup> July.

Term 3: Sat 19<sup>th</sup> Sept to Sunday 4<sup>th</sup> Oct.

Term 4: Sat 19<sup>th</sup> Dec.

## **Fortnight School Values Caring and Excellence**

We encourage parents to discuss and reinforce with their children what the actions for the weekly values might look like.



## **School Council 2026**

President: Jo Austin

Treasurer/Secretary: Lisa MacFarlane

Principal: Sarah Walker

Staff Representatives: Nicole Mathers and Janet Munn

Community Members: Elaine Hofen and Pam Beveridge

Parent Representatives: Jason Griebenow, Megan Sage, and Lisa MacFarlane.

## **Every Day Counts**

Please contact the school if your child is going to be away.

## **Bus Travellers**

Please notify the school if your child is being picked up so we can mark them off the roll. Parents are reminded that changes to bus travel arrangements require 24 hours notice and approval by Orbost Community College.

# TERM 1 CALENDER

## APRIL/MAY 2026

MON	TUE	WED	THU	FRI	SAT	SUN
27	28 Marc Van	29	30 Swimming Lakes Entrance Whole school	1 Alex Patterson ThinkUKnow Police Program	2	3
4	5 School Photos	6	7 Swimming Lakes Entrance Whole school	8 Library Visit P/1 Assembly	9	10
11 School Council 5:30pm	12 Marc Van	13 Athletic Sports OCC-whole school 10am	14 Swimming Lakes Entrance Whole school	15 Library Visit P/1	16	17
18	19	20	21 Swimming Lakes Entrance Whole school	22 Winter Sports Lakes Entrance 4/5/6 Assembly "Where's the Green Sheep" excursion Prep/1/2 Bairnsdale	23	24
25	26 Marc Van	27	28	29 Library Visit P/1	30	31