



# METUNG PRIMARY SCHOOL

*... the village school*

**Term 1**

**Week 4**

**Friday 20th February 2026**

*"It takes a village to educate a child"*

**90 Stirling Road,  
METUNG 3904  
Phone: 5156 2259**

**metung.ps@education.vic.gov.au  
www.metungps.vic.edu.au  
School no.3050**

**Principal  
James (Jim) Allen**

Metung Primary School acknowledges the Australian Aboriginal and Torres Strait Islander peoples as the first inhabitants of the nation and the traditional custodians of the lands where we live, learn and work.



## REGULAR EVENTS

### Mondays

**SCHOOL ASSEMBLY**  
from 9.00am



### Fridays

**LUNCH ORDERS FROM  
METUNG BAKERY &  
AROMA@METUNG**

## CALENDAR

### February

#### **Tuesday 24th**

**East Gippsland Shire Mobile Library**

*(students may borrow library books & return them each fortnight)*

### March

#### **Thursday 5th**

**MARC Library**

*(students may borrow library books & return them each fortnight)*

#### **Friday 6th**

**Cricket Clinic**

#### **Monday 9th**

**LABOUR DAY Public Holiday**

#### **Wed 11th-Mon 23rd**

**NAPLAN Assessments**

#### **Friday 13th**

**Cricket Clinic**

#### **Tuesday 17th**

**School Photos**

**School Council AGM**

#### **Friday 20th**

**Cross Country, Buchan**

#### **Friday 27th**

**Cricket Clinic**

### **FINANCIAL ASSISTANCE**

If you hold a valid means-tested concession card or are a temporary foster parent, you may be eligible for CSEF (Camps, Sport & Excursions Fund). The allowance is paid to the school to use towards expenses relating to camps, excursions, or sporting activities for the benefit of your child.

The annual CSEF amount for 2026 per student is:

\$400 for primary school students

\$400 for secondary school students

#### **How To Apply**

Please complete the form that was sent via uEducateUs or get one from the office and return to with a copy of your valid concession card.

### **PLEASE NOTE:**

As per Department guidelines, supervision is not required at school until 8.45am, therefore students who arrive before this time will be placed into our before school care breakfast club program and charged the relevant fee. Thank you for your cooperation in this matter.

**You can find the full edition of our newsletter in the 'communication' section of uEducateUs.**

## FROM THE PRINCIPAL

Hi Everyone,

Another wonderful week in our paradise under the sun.

I need to acknowledge a couple of wonderful people in our beautiful little school community. Firstly, Todd Matthews, father of Free in Year 4. Todd is a chef by trade and has done some great cooking for us now on two occasions. Last year Todd did all the cooking for the Footy Colours Day turning basic food into amazing fare. On Tuesday Todd came in and made pancakes for the school and the community members from St. John's. This was for Shrove Tuesday. The pancakes were great. Thank you, Todd. It also gave the pen pals an opportunity to see and meet the new preps and solidify the budding pen pal relationship.

Our other amazing volunteer is Sue Irvin. As you may have seen, Sue has been working in the evenings on our small garden beds. These have been replanted with beautiful marigolds and other flowering plants. Already the place looks fantastic. Thank you, Sue.

School closures. Thank you for your patience with the turmoil last week. When this happens again and we get a high fire danger rating, the school will relocate to Lakes Entrance Primary School until I am advised otherwise. Lakes Entrance Primary School hours are 9:00am-3:15pm. Please drop off and pick up via the Myer Street entrance. At least one Metung PS staff member will be waiting there from 8:45am. I realise that this will not be an option for some and that many of you will choose to keep your children with you. Please let me know via uEducateUs or text if your child will not be attending on these high FDR days. Thanks, this helps a lot.

Industrial Action. This year the Australian Education Union will continue the negotiations with the Victorian State Government for the new Enterprise Bargaining Agreement regarding pay and conditions for Department of Education staff. This is likely to have significant impacts on our school and rolling workplace stoppages are likely to come into effect in March. This may mean that our school may not have staff on strike days, and that students will be supervised but not taught on that day. Currently there are a lot of 'unknowns' around how this industrial action will play out, however Metung PS has a significant number of AEU members who may choose to go on strike. If you would like to support our staff and the industrial action, you can by not sending your children to school on that day. I understand that for some of you this is not possible due to work commitments or that you may not support the action taken by the AEU. There will be a lot of media coverage, and most will carry bias for one side. Please come and see me regarding the action, if you would like to know more about why the union is planning to take these measures. The first 24 hour statewide stop work is scheduled to be held on Tuesday the 24<sup>th</sup> of March. More details will be released closer to that date.

There is lots going on in such a small rural school.

Have a great weekend,

*Jim Allen.*

SCHOOL IS MADE FOR ADVENTURES.







# GRADE 1/2/3

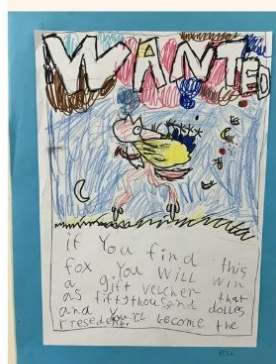


## Hairy Heads & Magic Beans

In Science with Mr Jeanes, the children have been learning about living things and how things grow. They have created Hairy Heads, and tying in with our Fairytales theme, are growing beanstalks.

## Grade 2 WANTED Posters

The Grade 2's have had fun creating Wanted posters to try and catch Fantastic Mr Fox. He is wanted for stealing chickens, geese and apples. Keep your eyes out, they are offering sizeable rewards for his capture.



## Hockey Clinic

Last Friday we had a hockey clinic at school where we could try out hockey.

'My favourite part was playing the dog' – Oaklie.

Thank you to Cleo, from Hockey Victoria, and Charlotte from Swan Reach Hockey Club, for a fun clinic.



# Grade Prep

This term the students are participating in a history unit of work titled, 'Then and Now'. They have enjoyed comparing daily family life from the past with the present.



In our sessions we have identified a range of objects as toys and described how they are used in everyday lives. The students worked together as a group to sort and classify cards, according to whether they were toys, food, cats or shoes. They also described the features of present-day toys and designed their 'dream toys'. The students then compared toys from the past with the present.

We will be focusing on past and present forms of transportation and communication in future sessions.

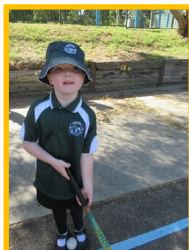
## HOCKEY

Everyone enjoyed the hockey session last week!

The children learnt the essential hockey skills for kids include mastering the basic grip, close-control dribbling, passing with the flat side of the stick, and trapping the ball. The games of 'Red Light, Green Light' and 'What's the time Mr. Wolf?' were favourites with the class!



**FUN**

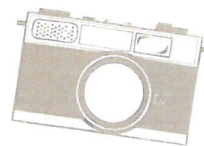




## PANCAKE DAY







## SCHOOL PORTRAITS ORDER FORM

### ORDER DETAILS

Family Name \_\_\_\_\_ Parent's Name \_\_\_\_\_  
Phone Number \_\_\_\_\_ Email Address \_\_\_\_\_  
School Name \_\_\_\_\_ Order Date \_\_\_\_\_

### PACKAGES

☐ **PACKAGE 1 \$ 40**  
(1) 5X7 INDIVIDUAL PHOTO  
(1) 8X10 CLASS PHOTO  
(1) 8X10 SCHOOL PHOTO  
(4) 4X6 INDIVIDUAL PHOTOS

☐ **PACKAGE 2 \$ 65**  
(1) 5X7 INDIVIDUAL PHOTO  
(1) 8X10 CLASS PHOTO  
(1) 8X10 SCHOOL PHOTO  
(4) 4X6 INDIVIDUAL PHOTOS  
PRINT READY DIGITAL FILES

☐ **PACKAGE 3 \$ 40**  
Print ready digital files,  
including class and  
school

### EXTRAS- Only available in addition to package

**PRINT SHEET \$ 25**  
A4 sheet with multiple size  
images, designed to cut & share.  
\_\_\_\_\_ quantity

**(1) 8X10 PRINT \$ 12**  
\_\_\_\_\_ quantity

**(1) 5X7 PRINT \$ 10**  
\_\_\_\_\_ quantity

**(4) 4X6 PRINTS \$ 10**  
\_\_\_\_\_ quantity

**SIBLING PHOTO \$ 28 PER FAMILY** (4) 6 x 4 prints  
(2) 5x7 prints  
\*Families adding sibling photo, will receive one less school photo

STUDENT NAME	CLASS	PACKAGE	EXTRAS	TOTAL
SIBLING PHOTO \$28 PER FAMILY				

### PAYMENT

- ☐ cash  
☐ direct deposit

Account name- Lauren Anderson Photography  
BSB-733270  
Account-690089  
Please use child's full name as reference

### GRAND TOTAL

\$

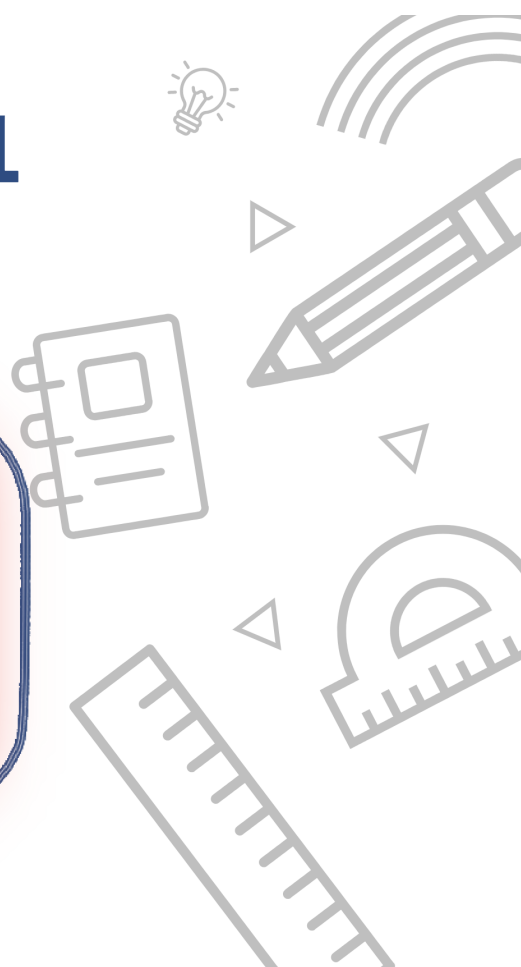
THANK YOU

# METUNG PRIMARY SCHOOL PHOTOS - 2026

Photo date March 17th 2026



Please note: orders close 13th March



## HOME READING & AWARDS

### AT-HOME READING

Metung Primary School values the importance of reading, and encourages students to read at home each night.

Each time students reach a series of 25 nights reading, they will receive a special award.

The more they read, the more awards they receive!

This has proven to be a very popular reading incentive for the children, with many records broken in the past.

Watch this space.....HAPPY READING EVERYONE!

25 Nights	50 Nights	75 Nights	100 Nights	125 Nights	150 Nights
175 Nights	200 Nights	225 Nights	250 Nights	275 Nights	300 Nights



### *Achievement Awards*

To **Aubren** for his attentiveness and fantastic listening skills, which enable him to follow instructions exceptionally well.

To **Billy** for being an enthusiastic and hard-working student who is making great progress in the area of mathematics. Billy can confidently recognise and name the number of objects within a collection up to 10 without counting.

To **Otis** for being a kind and caring student who has a great love of books. Otis can capably retell a story and demonstrates an excellent understanding of the storyline.



## SCHOOL NOTICES

# Happy Birthday

### FEBRUARY

1st  
Jethro

2nd  
Oaklie  
Olivia

3rd  
Kaiabelle

7th  
Aubren

8th  
Emily

21st  
Bodhi

23rd  
Alex

24th  
Ebony

29th  
Aurora



### BEFORE & AFTER SCHOOL CARE—AVAILABLE DURING SCHOOL TERMS

Before School Care is available from 7.45am-8.45am Mon-Fri.

After School Care is available from 3.20pm-4.20pm Mon-Fri.

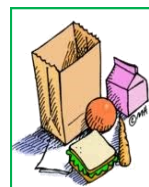
\$10.00 is charged for the first child per session, with each subsequent child charged \$5.00.

A concession rate of \$5.00 per child, per session, is available to all valid concession card holders.

Please let us know in advance if your child will be attending.

### SCHOOL LUNCH ORDERS

Lunch Orders are available to order from Metung Bakery or Aroma @ Metung on Fridays. Please place your child's lunch order either in person or online with each business.



### METUNG PRIMARY SCHOOL BANK ACCOUNT DETAILS FOR DIRECT DEPOSITS.

Metung Primary School Official Account:

**Commonwealth Bank**

**BSB - 063 000**

**Account # - 14182698**

## COMMUNITY NOTICES



**TRADERS WANTED!**  
Clear out & cash in!  
**8AM PITCHES**  
**\$5 STALL SITES!**

**SELL FROM...**

**CAR BOOTS**  
Preloved treasures

- Household goods
- Crafts & hobby items
- Bric-a-brac & books

**MARQUEES /  
UTES / TRUCKS**  
New or preloved

● **Household goods**

- Crafts & hobby items
- Bric-a-brac & books

**ROCK UP AT 8AM**  
Book a stall from just \$\$ & sell at our  
Community Market every 3<sup>rd</sup> Sunday of the month!