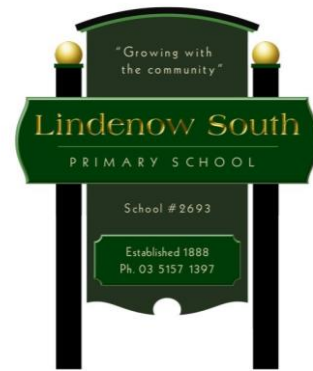


607 Lindenow/Glenaladale Road
Lindenow South, 3875
Telephone: 03 51571397
Fax: 03 51571722
Email: lindenow.south.ps@edumail.vic.gov.au
Mr. Michael Walker - Principal

'Growing with the Community' est. 1888

Your Local School - Award winner, Innovative and Caring



Newsletter

23rd May 2022

WEEK 21

Upcoming Dates:

May 20 – Grade 4 – 6 excursion to Buchan
June 13 – Queens Birthday Public Holiday
June 23 – SCHOOL PHOTOS

Principals Report

I'm happy to report that the NAPLAN online testing went according to plan and there were no issues. The results of these tests will be forthcoming and will be made available to the parents concerned as soon as is practicable.

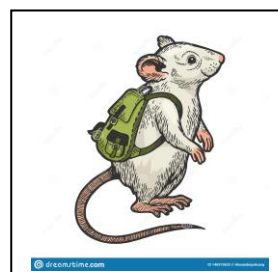
In the 'upcoming dates' section above I have put in the date of this year's school photos. This is advance warning so we can try to get everyone here on the date, looking great of course.

Attached to the back of this newsletter I have included your copy of the annual report to the school community. I do hope you will take the time to give it an examination. It contains a good snapshot of how the school performed both financially and academically throughout the 2021 school year. I found some of the information about how we performed in comparison to the rest of the state of particular interest.

We have been experiencing some problems with the odd mouse suddenly popping out of some of the student's backpacks. Could you all please check that they haven't left any un-eaten food etc in there for the mice to be attracted to?

The colder weather is definitely here now, we have school jumpers and hoodies available across a wide range of sizes at cost price (and a lot of free second hand ones) if they are required.

Michael Walker



GENERAL SCHOOL NEWS

- Please do not drop your child off at school before 8:00am and NEVER drop them if there is not at least one staff car in the carpark.
- It is very important that you ensure your child has enough food for the school day. Please monitor the number of pre-packaged sugary products you provide for them as this can have quite a dramatic effect on their performance at school.
- School hats are not required to be worn in term two and three.
- Try to monitor the state of your child's hair health. Be vigilant for the first signs of nit infestation and take decisive action if you detect anything. Please remember that students MUST be excluded from school if any live nits are discovered, until they have been appropriately treated.
- If your child chooses to ride a bike or scooter to school, then they must dismount before entering the school grounds and wheel their machine to the bike stand provided.



Did you hear about the
butcher who backed into
his meat grinder and got a
little behind in his work?

Email your joke of the week to news@fillmorecountyjournal.com - Include name and town.

There are many little ways to enlarge
your child's world. Love of books is the
best of all. ~**Jacqueline Kennedy**

**I HOPE THAT IN THIS YEAR TO COME,
YOU MAKE MISTAKES.**

Because if you are making mistakes,

THEN YOU ARE:

making new things,

TRYING NEW THINGS,

learning, living,

PUSHING YOURSELF,

changing yourself,

CHANGING YOUR WORLD.

Neil Gaiman

WHY IS SCHOOL IMPORTANT

- For most kids, school is the first setting where they learn to socialize with others. They learn to make friends, listen to teachers, and work through problems. Learning these social skills early on gives kids an important foundation for their interactions in society. It's the responsibility of teachers and other adults to encourage healthy socialization. They should also address issues like bullying.
- Being self-assured and confident in one's abilities is crucial to healthy self-esteem. People who don't have much [confidence](#) are more likely to be taken advantage of and struggle with anxiety. In a school setting, kids get the opportunity to build their confidence early on. As they learn to read, write, solve [math](#) problems, and more, their confidence in their abilities increases. A teacher plays a very important role in this. It's their job to celebrate a student's progress as well as their successes, as many struggle with certain subjects.
- Critical thinking is an essential part of any subject in school. Whether it's [literature](#), [science](#), or [history](#), students develop critical thinking techniques. They use these to absorb the material, form their own ideas, and express themselves in writing and speaking. These skills translate to every area of life, whether it's in academia, the work setting, or relationships.



HOLIDAY PROGRAM!



CIRCUS THEME!

June 27 - 29 2022

The Hub, 27 Dalmahoy Street Bairnsdale

Join in with other orchestral musicians and learn from professional local and Melbourne musicians!



If you don't play an instrument of the orchestra... join percussion !

We also offer a mentor program for more advanced players looking to gain teaching experience in a supportive environment!

Enroll online via this form:

<https://forms.gle/zBMDciznBeivra9N6>

Contact us at ally@crashendo-eg.org.au for more information!

Ph: Ally 0480 349 567 or Hilary 0455 872 296

PUZZLE PAGE



SPACE WORD SEARCH

Circle words in the puzzle below

E	Q	D	L	H	W	N	T	P
S	A	M	O	O	N	A	O	M
U	L	R	N	N	C	L	R	E
N	U	S	T	A	R	S	B	R
E	N	A	O	H	W	O	I	C
A	A	T	M	A	R	S	T	U
R	R	U	C	O	M	E	T	R
Z	G	R	A	V	I	T	Y	Y
V	E	N	U	S	G	E	R	W

earth
sun
moon

stars
mars
saturn

venus
mercury
gravity

comet
orbit
lunar

NAPLAN – information for parents and carers



2022

Why do students do NAPLAN?

NAPLAN is a national literacy and numeracy assessment that students in Years 3, 5, 7 and 9 sit in May each year. It is the only national assessment all Australian students do.

As students progress through their school years, it's important to check how well they are learning the essential skills of reading, writing and numeracy.

NAPLAN assesses the literacy and numeracy skills that students are learning through the school curriculum and allows parents/carers to see how their child is progressing against national standards and over time.

NAPLAN is just one aspect of a school's assessment and reporting process. It doesn't replace ongoing assessments made by teachers about student performance, but it can provide teachers with additional information about students' progress.

NAPLAN also provides schools, education authorities and governments with information about how education programs are working and whether young Australians are achieving important educational outcomes in literacy and numeracy.

Your child will do the NAPLAN tests online

Schools are transitioning from paper-based to computer-based assessments. Most schools will complete NAPLAN tests online in 2022. All Year 3 students will continue to complete the writing assessment on paper.

Online NAPLAN tests provide more precise results and are more engaging for students. One of the main benefits is tailored (or adaptive) testing, where the test presents questions which may be more or less difficult depending on a student's responses.

Tailored testing allows a wider range of student abilities to be assessed and measures student achievement more precisely. A student's overall NAPLAN result is based on both the number and complexity of questions they answer correctly. Your child should not be concerned if they find questions challenging; they may be taking a more complex test pathway.

What does NAPLAN assess?

NAPLAN assesses literacy and numeracy skills that students are learning through their regular school curriculum.

Students sit assessments in writing, reading, conventions of language (spelling, grammar and punctuation) and numeracy. Questions assess content linked to the Australian Curriculum: English and Mathematics.

All government and non-government education authorities have contributed to the development of NAPLAN test materials.

To find out more about NAPLAN, visit nap.edu.au

Participation in NAPLAN

NAPLAN is for everyone. ACARA supports inclusive testing so all students can participate in the national assessment program.

Adjustments are available for students with disability who have diverse functional abilities and needs.

Schools should work with parents/carers and students to identify, on a case-by-case basis, reasonable adjustments required for individual students with disability to access NAPLAN. Adjustments should reflect the support normally provided for classroom assessments.

To help inform these decisions, you may consult the [NAPLAN public demonstration site](#), the [Guide for schools to assist students with disability to access NAPLAN](#), or our [series of videos](#) where parents/carers, teachers and students share their experience of using NAPLAN adjustments.

In exceptional circumstances, a student with a disability that severely limits their capacity to participate in the assessment, or a student who has recently arrived in Australia and has a non-English speaking background, may be granted a formal exemption.

Your school principal and your local test administration authority can give you more information on adjustments for students with disability or the process required to gain a formal exemption.

What if my child is absent from school on NAPLAN days?

Where possible, schools may arrange for individual students who are absent at the time of testing to complete missed tests at another time during the school's test schedule.

What can I do to support my child?

Students are not expected to study for NAPLAN.

You can support your child by reassuring them that NAPLAN is a part of their school program and reminding them to simply do their best.

ACARA does not recommend excessive preparation for NAPLAN or the use of services by coaching providers.

Some familiarisation and explanation of NAPLAN is useful to help students understand and be comfortable with the format of the tests. Teachers will ensure students are familiar with the types of questions in the tests and will provide appropriate support and guidance.

See the types of questions and tools available in the online NAPLAN assessments at nap.edu.au/online-assessment/public-demonstration-site

NAPLAN timetable

The NAPLAN online test window is nine days. This is to accommodate schools that may have fewer devices.

The NAPLAN online test window starts on Tuesday 10 May and finishes on Friday 20 May 2022. Tests must be scheduled as soon as possible within the testing window, prioritising the first week.

Online NAPLAN test scheduling requirements are detailed in the table below.

How is my child's performance reported?

Individual student performance is shown on a national achievement scale for each assessment. A result at the national minimum standard indicates that the student has demonstrated the basic literacy and numeracy skills needed to participate fully in that year level.

A NAPLAN individual student report will be provided by your child's school later in the year. If you do not receive a report, you should contact your child's school.

How are NAPLAN results used?

- Students and parents/carers may use individual results to discuss progress with teachers.
- Teachers use results to help identify students who need greater challenges or extra support.
- Schools use results to identify strengths and areas of need to improve teaching programs, and to set goals in literacy and numeracy.
- School systems use results to review programs and support offered to schools.
- The community can see information about the performance of schools over time at myschool.edu.au

Where can I get more information?

For more information about NAPLAN:

- contact your child's school
- contact your local test administration authority at nap.edu.au/TAA
- visit nap.edu.au

To learn how ACARA handles personal information for NAPLAN, visit nap.edu.au/naplan/privacy

Test	Scheduling requirements	Duration	Test description
Writing	<ul style="list-style-type: none">• Year 3 students do the writing test on paper (on day 1 only)• Year 5 writing must start on day 1 (schools must prioritise completion of writing across days 1 and 2 only)• Years 7 and 9 writing must start on day 2 (schools must prioritise completion of writing across days 2 and 3 only)	Year 3: 40 min. Year 5: 42 min. Year 7: 42 min. Year 9: 42 min.	Students are provided with a 'writing stimulus' (sometimes called a 'prompt' – an idea or topic) and asked to write a response in a particular genre (narrative or persuasive writing)
Reading	<ul style="list-style-type: none">• To ensure online schools are able to complete NAPLAN tests within the nine-day testing window, Year 7 and 9 students can start with reading on day 1; however, writing must start on day 2• To be completed before the conventions of language test	Year 3: 45 min. Year 5: 50 min. Year 7: 65 min. Year 9: 65 min.	Students read a range of informative, imaginative and persuasive texts and then answer related questions
Conventions of language	<ul style="list-style-type: none">• To be completed after the reading test	Year 3: 45 min. Year 5: 45 min. Year 7: 45 min. Year 9: 45 min.	Assesses spelling, grammar and punctuation
Numeracy	<ul style="list-style-type: none">• To be completed after the conventions of language test	Year 3: 45 min. Year 5: 50 min. Year 7: 65 min. Year 9: 65 min.	Assesses number and algebra, measurement and geometry, and statistics and probability