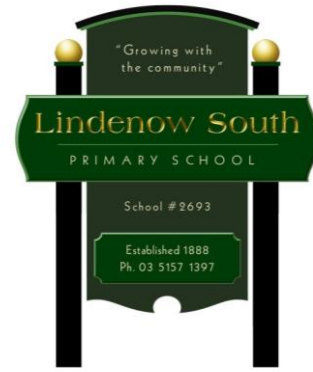


607 Lindenow/Glenaladale Road
Lindenow South, 3875
Telephone: 03 51571397
Fax: 03 51571722
Email: lindenow.south.ps@edumail.vic.gov.au
Mr. Michael Walker - Principal

'Growing with the Community' est. 1888

Your Local School - Award winner, Innovative and Caring



Newsletter

26th April 2022

WEEK 17

Upcoming Dates:

May 10 – NAPLAN testing commences
June 13 – Queens Birthday Public Holiday

Principals Report

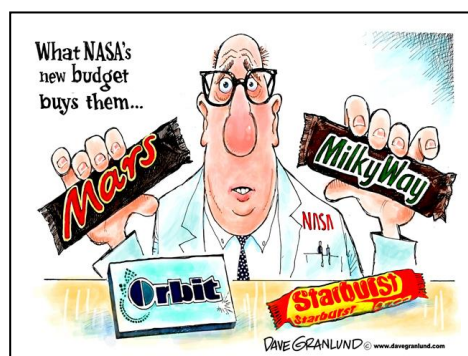
Welcome back to term two everyone. I trust you have had a very pleasant term break and that Easter was full of chocolatey goodness. Term 2 is notable for two things; firstly, it contains the NAPLAN testing period and secondly its end ushers in the completion of semester one and that means school reports.

Now that we have started term two it means that hats are no longer compulsory, however with winter now starting to make its presence felt it might be wise to equip your children with a beanie.

At some stage during the first half of this term I intend to take the senior class up to the Buchan Reserve to go for a nature walk and a BBQ. Once I settle on a date, I will send out consent forms.

A general reminder for your children not to bring precious toys to school unless they understand that they may be lost or broken. Sometimes they end up on the roof of a classroom and that is where they will stay.

Michael Walker

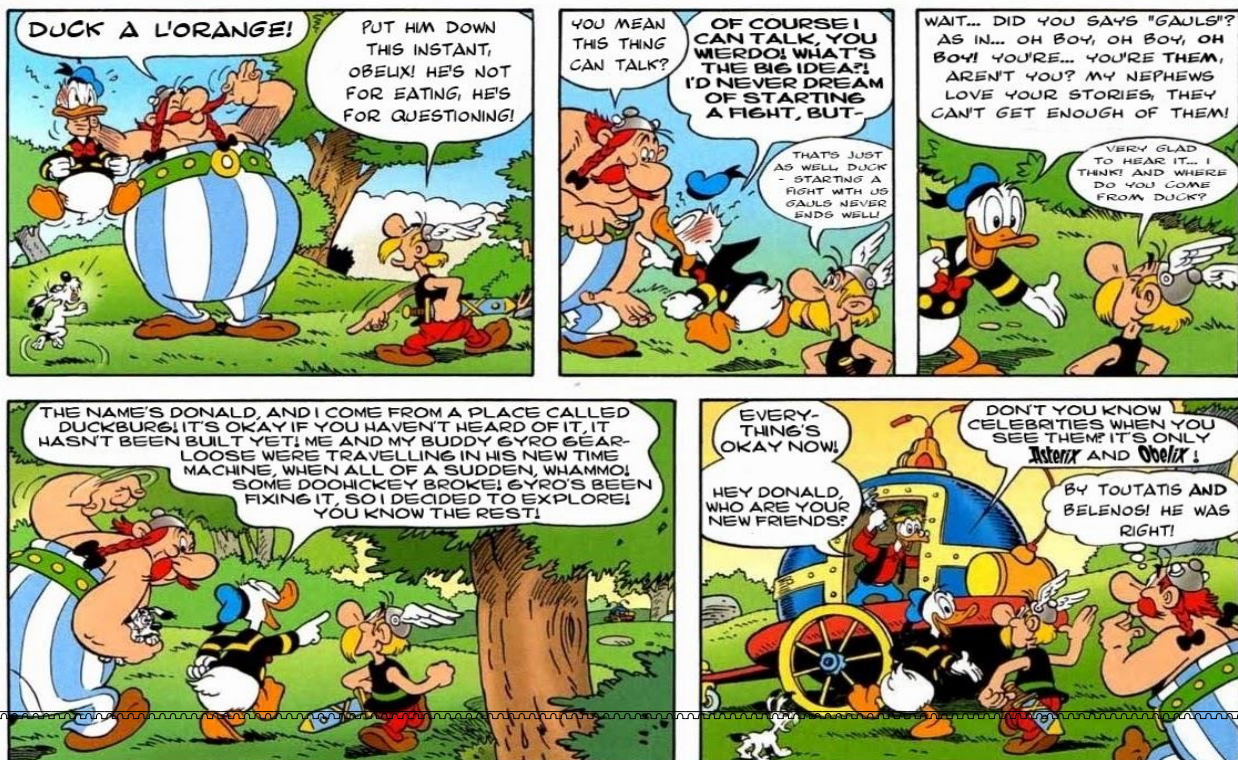


GENERAL SCHOOL NEWS

- Please do not drop your child off at school before 8:00am and NEVER drop them if there is not at least one staff car in the carpark.
- It is very important that you ensure your child has enough food for the school day. Please monitor the number of pre-packaged sugary products you provide for them as this can have quite a dramatic effect on their performance at school.
- School hats are not required to be worn in term two and three.
- Try to monitor the state of your child's hair health. Be vigilant for the first signs of nit infestation and take decisive action if you detect anything. Please remember that students MUST be excluded from school if any live nits are discovered, until they have been appropriately treated.
- If your child chooses to ride a bike or scooter to school, then they must dismount before entering the school grounds and wheel their machine to the bike stand provided.

CARTOON OF THE WEEK

DONALD DUCK AND FRIENDS...



QUOTE OF THE WEEK

No matter who tries to
teach you lessons
about life, you won't
understand it until
you go through it on
your own.



Thoughts on Spelling.

Good spellers know how to find out how and where to spell an unfamiliar word. They use dictionaries, spell checkers and other information sources with confidence.

ARE YOU
A SPELLING
GENIUS?



Grade 5 and 6 Information Evening



Save the date!

When: Wednesday 4th May 2022

Where: Bairnsdale Secondary College

**Any questions please contact us 5150 4800 or
bairnsdale.sc@education.vic.gov.au**