

**next week:**

Monday 25<sup>th</sup> May

Tuesday 26<sup>th</sup> May

Wednesday 27<sup>th</sup> May

Gr 3/4 Waste Management Incursion – Pelican Talk  
9am – 11am

Thursday 28<sup>th</sup> May

Friday 29<sup>th</sup> May

Breakfast Club  
8:15am – 8:45am  
Gr 3/4 Bike Ed  
Assembly 2:45pm

**coming up:**

This Friday 22<sup>nd</sup> May

Walk to School Day

7:50am meet at the Slipway

Breakfast Club  
8:15am – 8:45am

Gr Prep-2 Forge Theatre

Gr 3/4 Bike Ed  
Gr 5/6 Winter Sports  
Assembly 2:45pm

Tuesday 9<sup>th</sup> June

Gr 5/6 Swimming commences

**reminders:**

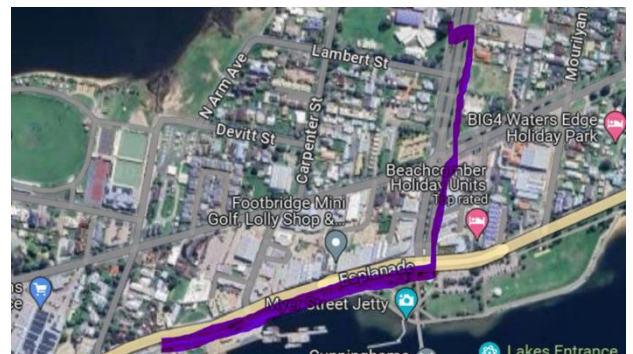
Check Compass for the Gr 5/6 swimming event to give consent.

**Walk to School Day**  
**This Friday 22<sup>nd</sup> May**

**When:** Friday 22<sup>nd</sup> of May

**Where:** We will be meeting at the Slipway, Gippsland Jersey shop (Opposite *The Lakes Sports and Community Club*) on the Esplanade at 7:50am for an 8:00am departure to school.

**Route:** Please see the attached picture (purple line). We will walk along the Esplanade, cross at the lights (opposite *The Servo*), make our way up past the shops, Police Station and then cross at the Myer Street School entrance crossing and into school.



**Breakfast:** The usual “Brekkie club” will be operating along with French toast and bacon cooked on the BBQ.

If you have any questions, please feel free to contact the office or call 03 5155 1812.



National Road Safety Week 2026 17-24 May  @nationalwalktoschool  @lakewalkschool  #WSTSD  National Road Safety Week 2026 17-24 May

WALK.COM.AU

SUPPORTED BY THE AUSTRALIAN GOVERNMENT AND ALL STATE, TERRITORY AND LOCAL GOVERNMENTS



## Principal's Report

### 'Showcase your school'

This week is Education Week, and this year's theme is 'Showcase your School'. So, what makes LEPS great, what are we most proud of, and how do we best support student learning.

Every school can define themselves with special things that help support students and provide a difference to other schools. It's important to know what sets them apart from other schools, and what makes them such a great place to learn, in order to support the students.

This really can be broken down into 4 main areas:

- **Community support** - Strong community support in schools helps students feel safe, valued, and motivated to learn. When teachers, parents, and local communities work together, students benefit from better learning opportunities, stronger relationships, and a more positive school environment.



- **Extra-Curricular activities** – Extra-Curricular activities such as sports teams, camps, excursions help students develop teamwork, leadership, and social skills outside the classroom.



- **Wellbeing support** - Wellbeing support in schools helps students maintain their mental, emotional, and physical health. As a school we provide counselling services, wellbeing programs, peer support groups, and spaces where students feel supported, respected, and encouraged.



- **Educational outcomes** - The school achieves educational outcomes above state averages and performs strongly compared to similar schools. This reflects the dedication of teachers, effective learning programs, and the supportive school environment that helps students reach their full potential.



**2027 Prep Enrolments:** We have already had some inquiries about enrolments for Prep in 2027. Enrolments will now be part of the governments new online system being rolled out this year. It is a system we are still learning but happy to support families where we can. Please see our Administration staff if you would like to arrange a school tour or require any further information.

Have a great week.

*Simon Prior*

<b><u>WHOLE SCHOOL ATTENDANCE</u></b>	
<b><u>Last week</u></b>	
Monday 11/5	<b>89.80%</b>
Tuesday 12/5	93.47%
Wednesday 13/5	<b>87.76%</b>
Thursday 14/5	92.25%
Friday 15/5	<b>87.76%</b>

## Pupils of the Week - Congratulations:

**Lenny Foat** – Lenny shows mutual respect by taking turns, sharing and making sure everyone has someone to play with. Thank you for being so kind, Lenny!

**Logan Poynton** – For challenging himself when working in small groups, to listen and actively taking turns, sharing time and equipment!

**Akayesha Dowie** – Akayesha consistently shows mutual respect through her kind, caring and empathetic nature. She is always considering the feelings of her classmates and helps create a positive and supportive classroom!

**Nylah Meloury-Brown** – For listening thoughtfully during one-on-one instructions for Pathways and Reading conferences. Great job, Nylah!

**Jai Hobbs** – You are consistently respectful when interacting with anyone in the class. It is such a pleasure to have you in 1/2C!

**Mackenzie Lee** – For always being kind, honest and treating everyone with respect. You are a shining star, Mackenzie, keep being you!

**Braydan Boehmke** – Welcome to LEPS, Braydan. You are a caring and respectful learner, quietly completing tasks as expected, listening to others to help them and to play games and do activities!

**Sienna Marturano** – Sienna, you have had a fantastic week! You have shown great respect towards others, contributed thoughtfully to class discussions, and taken pride in all your work. Keep up the wonderful effort!

**Emilia Docherty** – You are a kind and caring person who always shows such respect to everyone. We are very lucky to have you in 5/6B!

**Billy Hiam** – Billy, we are so glad you've joined LEPS. You consistently give everything your best, treat others with respect and make us smile. We look forward to seeing you smash Grade 6!

**Phys Ed Award – Luka McCartney-Denton** – Luka had an amazing PE session, listening respectfully to instructions. Luka engaged in all the activities and helped others. Keep it up superstar!

**Respectful Relationships Award – Ledger Elliott** – For always being kind to your peers. I love seeing you share with those around you. You bring joy to everyone around you, keep being you!

**STEM Award – Isabelle Kearney** – For her amazing finger knitting in STEM. She showed excellent patience and persistence and encouraged others to complete their own!

**Visual Arts Award – Jakaine Wanganeen** – Jakaine listens to instructions respectfully and gets working straight away. He was so focused and excelled at the task!



Artwork by Jakaine Wanganeen

# 1/2C SUPER POWER: MUTUAL RESPECT DURING READING



Listening!!!



BOOM!



Wow!



Treat others with respect :)



Let others learn



ZAP!



## Grade 5/6 Fishy Friends

Meet some of our fishy friends the 5/6 students have crafted with air dry clay. They've got loads of quirky character! Can be seen on display in the 5/6 area.



# ART

Across the school in Art, creativity has been in full swing!

Our 5/6 students have begun creating their paper mâché amphoras, which they'll continue working on during Open Day. Pop in, say hello, and don't be afraid to get your hands gluey!

The 3/4 students have finished their Jean-Michel Basquiat-inspired bold and energetic cranium artworks. The level of engagement, creativity, and enthusiasm throughout this unit has been incredible!

Our 1/2 students have been exploring the landscape artworks of Etel Adnan and creating their own vibrant interpretations inspired by her unique style.

Meanwhile, Preps have been making fairy tale wands and exploring colour in painting sessions.



## Prep

This week the Preps made glitter jars and practiced using our jars to help us calm down when our mind is 'swirling'!





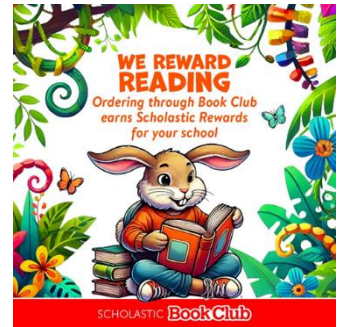
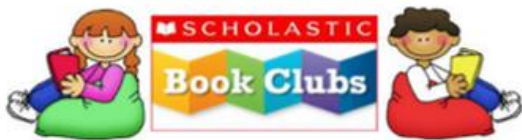
## Lunch time 'Rubbish Heroes'

Our lunch time hero's this week have been Xavier, Amelia and Charlotte.

Thank you for showing pride in our school grounds!



## Book Club



## Book Club Orders

### Book Club orders 2026 Issue 4

Cutoff date: Friday 12<sup>th</sup> June.

**Lunch orders are ONLY delivered on Tuesdays.**

Lunch orders need to be handed into the classroom teacher by **12pm on the Monday** prior to delivery on **the Tuesday**.

All orders are to be in a brown paper bag, clearly marked with your child's name, class and food order, including the correct money.

**Please note they will not provide change.**

There are gluten free options available, but it must be marked clearly on the bag when ordering.

**Please indicate what flavour drink your child would like when ordering.**



Kids Chicken Burger [GFA] Tasty Cheese, lettuce and Mayonaise	\$8.50
Kids Beef Burger [GFA] Tasty Cheese, lettuce and Tomato Sauce	\$8.50
Housemade 2 x Chicken Strips and a serve of chips [GFA]	\$8.00
3 x Chicken Nuggets and a serve of chips	\$4.00
6 x Chicken Nuggets and a serve of chips	\$6.00
Housemade Sausage Rolls & Sauce	\$5.50
Mini Pizzas Margherita, Cheese & Ham or Ham, Cheese & Pineapple	\$5.50
Toasted Sandwiches Ham & cheese or Cheese [Add tomato on request]	\$5.50
Hot Dog W/Sauce	\$6.00
Juice Box <span style="color: red;">Apple OR Orange</span>	\$2.50



# East Gippsland Aquatic Strategy



## Help shape the future of aquatic facilities in East Gippsland

We're creating a new **Aquatic Strategy** and want to hear from you.

The strategy will consider:

- . Current aquatic community needs and perspectives.
- . Area growth and projected populations.
- . Current condition of existing facilities.
- . Costs of the service and facilities over the next 10 years.
- . Infrastructure renewal, service improvement and strategic investment.
- . Alignment with the Council Plan and sports facility planning priorities.

### Community survey now open

Please scan the QR code to complete the survey and learn more or visit any of our recreation or service centres. Survey closes 29 May 2026.



<https://yoursay.eastgippsland.vic.gov.au/east-gippsland-aquatic-strategy>

Questions about the engagement and survey can be directed to @leisure Planners via email to [info@atleisure.com.au](mailto:info@atleisure.com.au)



East Gippsland Shire Council  
Phone 5153 9500  
Email [feedback@egipps.vic.gov.au](mailto:feedback@egipps.vic.gov.au)  
Web [eastgippsland.vic.gov.au](http://eastgippsland.vic.gov.au)

'The Department of Education and Training does not endorse the products or services of any private advertiser. No responsibility is accepted by the Department of Education Employment and Training for accuracy of information contained in advertisements or claims made by them.'

