

Phone: 5155 9241  
4 Dalley Street Buchan VIC 3885  
buchan.ps@education.vic.gov.au  
www.buchanps.vic.edu.au  
BSB: 063-501  
Account: 00906592

BUCHAN PRIMARY SCHOOL  
IS A BARR SCHOOL (BUSHFIRE AT RISK REGISTER)

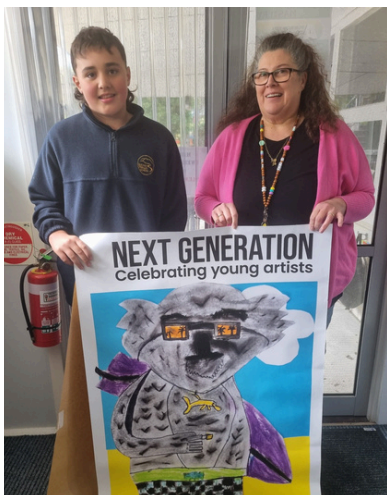
## AROUND THE SCHOOL

### FULL STEAM AHEAD!

The past couple of weeks have been extremely busy, with students participating in their final swimming sessions, enjoying lawn bowls, taking part in Winter Sports, and completing end-of-term assessment tasks. It has been wonderful to see students embracing these opportunities while continuing to work hard in the classroom. Excitement is also building as our Grade 5/6 students prepare to head off to camp next Monday. Not long after, our Grade 3/4 students will embark on their own camp adventure on the 22nd of June. We wish all students a fantastic and memorable experience.

### COMING UP:

- Curriculum Day (12/6/26)
- Grade 5/6 Camp (15/6/26 to 19/6/26)
- Grade 3/4 Camp (22/6/26 to 24/6/26)
- Term 2 Finish: 1pm (Friday 26/6/26)



### EAST GIPPSLAND ART GALLERY

Congratulations to Fletcher, whose pastel koala artwork was selected to be printed on a large banner and featured as the official promotional poster for the Bairnsdale Art Gallery exhibition. This outstanding achievement was chosen from artwork submitted by students across Gippsland. Last week, Fletcher was presented with both the promotional poster and his original artwork. We are incredibly proud of his creativity, talent, and wonderful representation of our school.

# PRINCIPAL'S REPORT

We acknowledge the Gunai Kurnai people as the Traditional Owners of the land on which we work, learn and play. We pay our respect to Gunai Kurnai elders past, present and emerging and extend our respect to Aboriginal and Torres Strait Islander students and families of Buchan Primary School.



## 2026 Semester 1 Reports

Following the in-principle agreement reached between the Department of Education and the Australian Education Union (AEU), the AEU informed the Department on the 18<sup>th</sup> of May 2026 that all industrial action related to negotiations to finalise the new Victorian Government Schools Agreement (VGSA) has been entirely suspended. This includes all stop-work action. The AEU had included a ban on all aspects of work related to the provision of written comments on student reports provided to parents as part of its industrial action.

While this ban has now been lifted, the Department of Education recognises that it may be difficult for some schools to provide full written comments for Semester 1 reports. Schools that have been impacted by the industrial action, including Buchan Primary School, will indicate student achievement against the relevant curriculum areas of the Victorian Curriculum. A progression point will also be provided to parents; however, full written and personalised comments will not be included in Semester 1 reports.

To support families in understanding their child's progress and achievement, Buchan Primary School will offer parent-teacher conferences early in Term 3 for any parents or carers wishing to discuss their child's report in more detail.

Previous parent-opinion surveys (2022 & 2023) identified that many families were unsure about how their child's learning is assessed. In response, I have included a brief two-page guide in this newsletter, that I have attached over the past few years and families have told me they found it useful. As reports will be going home in a few weeks. The guide explains how assessment is conducted, how progression points are determined, and how student growth and achievement are measured. I hope this information provides families with a clearer understanding of our assessment processes and helps build confidence in how we monitor and report student learning. If you have any questions, please feel free to reach out.

## School Photos

Just a friendly reminder that Classic Studios will be coming on Thursday the 11<sup>th</sup> of June to take school photos. This year ordering is all online and can be done up until the 24<sup>th</sup> of June. **If you would like sibling photos taken you must let us know before the day so they are taken on the day.**

Please log on to the link below to order your photos:  
[www.classicstudiosvic.com/school-photo-orders](http://www.classicstudiosvic.com/school-photo-orders)



### Dental Patrol Van:

Unfortunately, the Dental Patrol Van visit has been postponed due to the dentist being unwell. The appointment will be rescheduled for Term 3, and we will provide families with updated dates and information as soon as they become available.

### Swimming Fees:

Just a friendly reminder to families who may still have an outstanding \$100 payment for the swimming program. If you are unsure whether your payment has been made, please contact Julie at the school office, who will be happy to assist you.

### CSEF:

The Victorian Government's Camps, Sports and Excursions Fund (CSEF) helps eligible families with the cost of school camps, excursions, incursions and sporting activities. From 2026, eligible students can receive \$400 per year to support participation in these valuable learning experiences.

Families who hold a valid means-tested concession card, support a student in out-of-home care, or meet certain special consideration criteria may be eligible to apply. Applications for 2026 close on 26 June 2026. I have attached the flyer to the last page of the newsletter.

### Voluntary Contributions:

A sincere thank you to the families who support our school through voluntary contributions. While these contributions are optional, they play an important role in enhancing the opportunities and resources available to our students. In 2026, the voluntary contribution is \$260 per student and helps fund communication platforms, Science of Reading resources, classroom supplies, online learning subscriptions, excursions, bus transport, arts performances, and Grade 6 graduation items. Your support makes a meaningful difference and helps us continue to provide enriching learning experiences.

Best regards,  
Aidan Johnston,  
Principal

## PARENT PAYMENTS POLICY

### ONE PAGE OVERVIEW



#### FREE INSTRUCTION

- Schools provide students with free instruction and ensure students have free access to all items, activities and services that are used by the school to fulfil the requirements of the Curriculum. This includes the Victorian Curriculum F-10, the Victorian Certificate of Education (VCE) including the VCE Vocational Major and the Victorian Pathways Certificate.
- Schools may invite parents to make a financial contribution to support the school.



#### PARENT PAYMENT REQUESTS

Schools can request contributions from parents under three categories:

##### Curriculum Contributions

Voluntary financial contributions for curriculum items and activities which the school deems necessary for students to learn the Curriculum.

##### Other Contributions

Voluntary financial contributions for non-curriculum items and activities that relate to the school's functions and objectives.

##### Extra-Curricular Items and Activities

Items and activities that enhance or broaden the schooling experience of students and are above and beyond what the school provides for free to deliver the Curriculum. These are provided on a user-pays basis.

- Schools may also invite parents to supply or purchase educational items to use and own (e.g. textbooks, stationery, digital devices).



#### FINANCIAL HELP FOR FAMILIES

- Schools put in place financial hardship arrangements to support families who cannot pay for items or activities so that their child doesn't miss out.
- Schools have a nominated parent payment contact person(s) that parents can have a confidential discussion with regarding financial hardship arrangements.



#### SCHOOL PROCESSES

- Schools must obtain school council approval for their parent payment arrangements and publish all requests and communications for each year level on their school website for transparency.

## URBAN CAMP GRADE 5-6



It is hard to believe that our Urban Camp in Melbourne with Swan Reach and Nungurner Primary Schools is just a week away. The Grade 5/6 students will be attending with Mr Johnston and have an exciting program ahead, including a river cruise, Scienceworks, Melbourne Zoo and an IMAX experience, along with many other fantastic activities. This camp is particularly important for our Grade 6 students as it provides an opportunity to strengthen friendships and connections with students they may attend high school with next year. **Just a reminder, students need to be at Bairnsdale Station by 6am on Monday 15/6.**

**Cost of Camp:** \$580

**Grades:** 5-6

**Dates:** Monday the 15<sup>th</sup> of June to Friday the 19<sup>th</sup> of June

Please return medical forms and payment to Julie by Thursday 11/6.

## COOLAMATONG CAMP GRADE 3-4



On June 22nd, our Grade 3/4 students will attend Camp Coolamatong alongside students from Nungurner, Metung, Swan Reach and Bruthen Primary Schools. Set on 170 acres of farm and bushland, Coolamatong provides an excellent setting for outdoor learning and adventure. Students will participate in activities including canoeing, archery, low ropes, mountain biking and raft building. All activities are led by qualified camp staff and designed to challenge students in a safe environment. School camps help develop resilience, independence, teamwork and problem-solving skills. They also build confidence, encourage friendships and create lasting memories. We are looking forward to a fantastic camp experience.

**Cost of Camp:** \$360

**Grades:** 3-4

**Dates:** Monday the 22<sup>nd</sup> of June to Wednesday the 24<sup>th</sup> of June

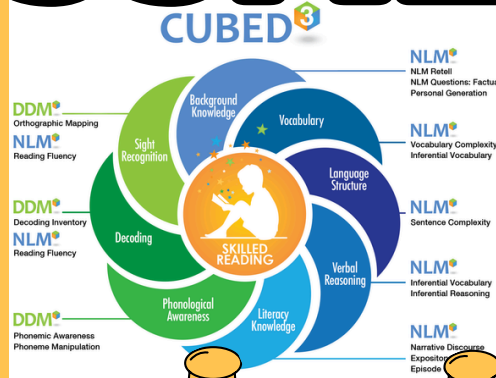
Please return medical forms and payment to Julie by Tuesday 16/6.

## SOMER'S SCHOOL CAMP GRADE 5-6



From the 25th of August to the 2<sup>nd</sup> of September, some lucky students from East Gippsland and East Wellington will have the opportunity to attend the Somers School Camp, a unique nine-day residential program run by the Victorian Department of Education. At this stage, we have not yet been advised how many places Buchan Primary School will receive. Somers is offered every two years to about 4 students in Grades 5/6 and provides an incredible opportunity for students to develop independence, resilience, teamwork and confidence while meeting students from across Victoria. Having attended Somers myself as a Visiting Teacher 4 years ago, I can confidently say it is an unforgettable experience. Every student I have spoken to who has attended has absolutely loved it and returned with wonderful memories and lifelong friendships.

# ASSESSMENT



## Assessment

Assessment encompasses both formative and summative types. Formative assessment occurs continually, such as when students write on mini whiteboards to demonstrate understanding. If misunderstandings are evident, the material may be retaught immediately or in a subsequent lesson. Summative assessment, like tests, is what parents typically think of when they hear the term assessment.

## FAQ

**Does assessment take a long time?**  
As mentioned, assessment is a broad term that includes various methods, such as student work samples. Summative assessment in reading for Foundation students only takes about 20-30 minutes (each) and includes all DIBELS sub-tests and the CUBED-3 NLM assessment.

## English / Foundation Level / Language / Phonics and word knowledge

### Content description

Recognise all upper- and lower-case letters and the most common sound that each letter represents

### Foundation Level Achievement Standard

#### Reading and Viewing

By the end of the Foundation level, students use questioning and monitoring strategies to make meaning from texts. They recall one or two events from texts with familiar topics. They understand that there are different types of texts and that these can have similar characteristics. They identify connections between texts and their personal experience. They read short predictable texts with familiar vocabulary and supportive images, drawing on their developing knowledge of concepts about print, and sound and letters. **They identify all the letters of the English alphabet in both upper- and lower-case, and know and can use the sounds represented by most letters.**

## Reading Example

In Reading and Viewing, there are 14 content descriptors for Foundation students that teachers use to guide their teaching. A Content Descriptor is a specific statement outlining what students are expected to learn in each subject at each year level. The Achievement Standards describe what students should know and be able to do by the end of the year. Together, they guide teaching and measure student progress. Teachers establish what each student can and cannot do through assessments. Different assessments provide different information.

## Alphabet recording sheet - lower case

Use this recording sheet for the Words and sounds: Letter - sound task.

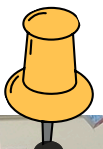
Student Name: _____		DIBELS 8 <sup>th</sup> Edition Letter Naming Fluency		Benchmark LNF K Beginning	
Alphabet letter	Date	Examiner script	Examiner	Start timer	After you say Begin.
s		Here are some letters (point to the student form). Tell me the names of as many letters as you can.	Student begins: wait 3 seconds, name the letter; point to the next letter, and say 'Keep going; mark the missed letter as incorrect.		
m		When I say 'begin,' start here (point to the first letter), and go across the page (point).	Student says letter sounds: say 'Remember, tell me the letter's name, not its sound. Score letter sounds as incorrect.		
f		Point to each letter and tell me the name of that letter. If you come to a letter you don't know, I'll tell it to you. Put your finger on the next letter. Ready? Begin.	Student does not produce any correct letter names in the first line (10 letters): discontinue LNF.		
t					
w					
l					
g					
r					
h					
a					
n					
y					

## How Is it Assessed?

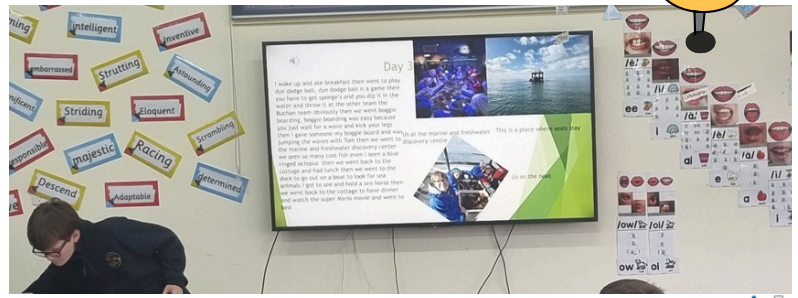
The highlighted part of the Achievement Standard above would be assessed through a sound and letter check for both upper- and lower-case letters, followed by a Letter Naming Fluency and Phonics test (All DIBELS sub-tests). If the Foundation student completed the assessments successfully, then they have met that statement/sentence of the Foundation Achievement standard for Reading & Viewing (data is triangulated).



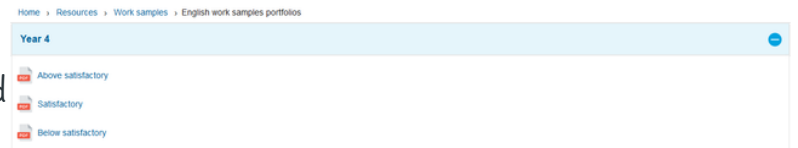
# What About a Different Example?



This example applies to the Speaking & Listening curriculum. In our classroom, students plan and deliver presentations for different purposes, being explicitly taught the necessary skills and program use. They might be given criteria and a specific timeframe to complete their presentations. While Grade 4 and Grade 6 students might have similar tasks, the expectations differ across grades. Each grade generally has about 15 content descriptors in Speaking and Listening that guide teachers to know what they need to teach to students. These content descriptors generally form a continuum (they build on the previous level/grade expectation and the complexity increases each year). As shown below, the requirements for Grade 3 students differ from those students who are in Grade 6. Like the previous example, teachers look at the achievement standard to establish what level the student has achieved. A handful of student samples might be chosen for moderation (a second teacher will give a level and discuss why), teachers may also look at things like “sample banks” provided by ACARA to help determine the level and see comparable work. We also use a website that gives what is called “comparative judgement”, this helps us evaluate student work by comparing pairs of samples to determine which is a stronger piece. As you can see, different standards are assessed differently.



English work samples portfolios



## Level 3

### Speaking and Listening

Plan and deliver short presentations, providing some key details in logical sequence, using appropriate tone, pace, pitch and volume (VCELY276)

**End of Grade 3**

## Level 4

### Speaking and Listening

Plan, rehearse and deliver presentations incorporating learned content and taking into account the particular audiences and purposes such as informative, persuasive and imaginative, including multimodal elements (VCELY308)

**End of Grade 4**

## Level 5

### Speaking and Listening

Participate in informal debates and plan, rehearse and deliver presentations for defined audiences and purposes incorporating accurate and sequenced content and multimodal elements (VCELY338)

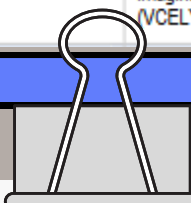
**End of Grade 5**

## Level 6

### Speaking and Listening

Participate in formal and informal debates and plan, rehearse and deliver presentations, selecting and sequencing appropriate content and multimodal elements for defined audiences and purposes, making appropriate choices for modality and emphasis (VCELY367)

**End of Grade 6**



# Assessment Semester 1

Over the past few weeks, teachers have been completing whole-class and one-to-one assessments to determine each student's progression points and identify the achievement standards they have met. Semester 1 reports, without written comments, will be distributed in the final week of term. Parent-teacher conferences will be held early in Term 3, providing an opportunity to discuss student progress, achievement, and future learning goals in more detail.

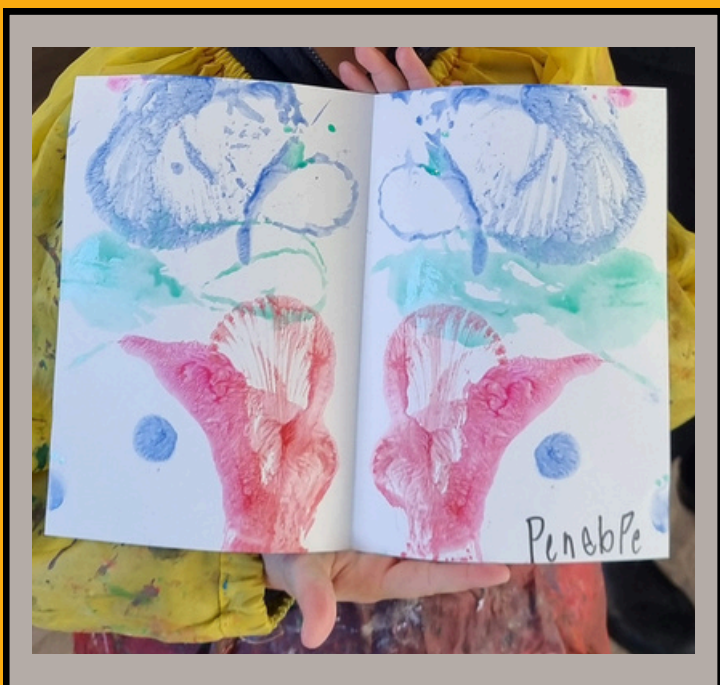


# NAIDOC Reconciliation Week

A fortnight ago, students spent the week participating in a range of Reconciliation Week activities and reflecting on the histories, cultures and contributions of Aboriginal and Torres Strait Islander peoples. Students learned about the significance of National Sorry Day, explored First Nations stories and discussed the importance of respect, understanding and reconciliation in Australia.

## Grade 6 T-Shirts, Certificates & Badges

Last week, our Grade 6 students were proudly presented with their Captain and Vice Captain certificates, signed by Darren Chester. They also received their Grade 6 T-shirts and badges, marking an important milestone in their final year of primary school and recognising their leadership roles within our school community.



## Art

The junior class created colourful symmetrical prints using paint and a folding technique. They explored colour mixing, patterns and texture while developing their creativity and fine motor skills. Each artwork revealed a unique surprise design when the paper was opened, encouraging curiosity, imagination and artistic expression. The senior class used chalk on dark paper to create striking moonlit scenes, exploring contrast, shading and texture techniques.

# Grade 6 East Gippsland Division Bowls

Buchan Primary School proudly entered the Grade 6 East Gippsland Lawn Bowls Competition for the first time last week. Throughout the day, students developed and practiced a range of skills, including accuracy, control, strategy, teamwork and sportsmanship. The event provided an enjoyable opportunity for all students to participate and experience success, regardless of their sporting background or previous experience. A big thank you goes to the lawn bowls staff and volunteers who generously gave their time to coach and encourage the students throughout the competition. I was delighted to hear that all students represented the school exceptionally well, displaying excellent behaviour, enthusiasm and respect while having a fantastic time.



## Swimming

Students recently completed five days of swimming lessons at the Lakes Entrance Aquadome. Across ten lessons, they developed their confidence and skills in a range of swimming strokes, including freestyle and backstroke. Throughout the program, students worked hard to improve their technique, water safety awareness and overall fitness. It was wonderful to see the progress made by all students, regardless of their starting level. A huge thank you to the swim instructors for their professionalism, encouragement and support throughout the week. Their positive approach helped make the experience enjoyable and rewarding for everyone involved. We look forward to going back in 2027!



# STUDENT OF THE WEEK



## OLIVIA

For working hard in class and being adaptable when required. Last week, you showed great leadership. Thank you for trying your best.

## PENELOPE

For consistently treating others with respect and kindness. This term, you have made your peers smile, by your positive approach to learning. Great work



## JESSICA

For continuing to make fantastic progress in your learning and trying your best. Your understanding of your 5s and 10s timetables is very strong. Keep up the great work.



## FLETCHER

This student has shown great determination and perseverance when learning new concepts in maths. Keep up the fantastic effort, Fletcher!



# Term 2: 2026

MONDAY	TUESDAY	WEDNESDAY	THURSDAY	FRIDAY
May 25th	May 26th	May 27th	May 28th	May 29th
MARATHON	Visit from Year 6 SIS		Swimming	Swimming
June 1st	June 2nd	June 3rd	June 4th	June 5th
	Grade 6 Football Girls and Bowls			
June 8th	June 9th	June 10th	June 11th	June 12th
King's Birthday Public Holiday	School Council		School Photos	Curriculum Day No School
June 15th	June 16th	June 17th	June 18th	June 19th
Grade 5/6 Melbourne Camp	Grade 5/6 Melbourne Camp	Grade 5/6 Melbourne Camp	Grade 5/6 Melbourne Camp	Grade 5/6 Melbourne Camp

## Events Later in Term 2

June 22<sup>nd</sup> to June 24<sup>th</sup>

Grade 3-4 Camp

June 26th

Last Day of School - 1PM FINISH



**Term 2 Ends  
Friday 26 June**



the saltwater creative co  
ART & CERAMICS STUDIO

# WHAT'S ON WINTER HOLIDAYS AT SALTWATER CREATIVE

## FLUID ACRYLIC SKATEBOARD PAINTING

Tue 7<sup>th</sup> of April @ 10.00am - 11:30pm

Thu 16<sup>th</sup> of April @ 10:00am-11.30pm

Kids will experiment with fluid acrylic pouring techniques before executing a final design on their very own skateboard decks.

\$60.00pp (firing and glazing included)

## AIR DRY CLAY - MAGNETS MAKING

Thu 2nd of July @ 12pm - 1:30pm

Air dry clay offers so much fun as much as clay without having to wait for 4 weeks for the piece. kids can create and paint the individual letters of their name or favourite animals.

\$60.00

## KIDS POTTERY INTRO TO WHEEL THROWING

Tue 30<sup>th</sup> of June @ 1pm - 2.30pm

Thurs 2nd July of April @ 10am - 11.30am

Kids get to step up to the potters wheel and learn all the basics.

\$65.00pp (firing and glazing included)

## CERAMIC WALL HANGINGS / WIND CHIMES - POTTERY FOR ALL AGES

Tue 7<sup>th</sup> of July @ 10am - 11.30am

Thur 9<sup>th</sup> of July @ 12pm - 1.30pm

Kids have there own Ceramic Wind Chimes for their wall. We supply the clay and a whole mess of colours and additions to create your masterpiece.

Be as crazy & creative as you can!

\$55.00pp (firing and glazing included)

## TEXTURED ART WORKSHOP - FOR ALL AGES

Tue 7<sup>th</sup> of July @ 12pm - 1.30pm

Thu 9<sup>th</sup> @ 10am - 11:30am

We LOVE getting artsy and this workshop is exactly about that! We take you or/and your little artist through shapes and techniques to create their unique masterpiece of textured art. Expect messy hands!

\$60.00pp

*Please note depending on the weather you might need to leave the pieces in the studio to dry for 24h & clay pieces will take 3-4 weeks to be fired and finished.*

# FINANCIAL ASSISTANCE

## INFORMATION FOR FAMILIES

Every Victorian child should have access to the world of learning opportunities that exist beyond the classroom. The Camps, Sports and Excursions Fund helps ensure that no student will miss out on the opportunity to join their classmates for important, educational and fun activities. It is part of making Victoria the Education State and the Government’s commitment to breaking the link between a student’s financial circumstances and their outcomes.

## CAMPS, SPORTS and EXCURSIONS FUND (CSEF)

School camps provide children with inspiring experiences in the great outdoors. Excursions encourage a deeper understanding of how the world works while sports teach teamwork, discipline and leadership. All are a part of a healthy curriculum.

CSEF is provided by the Victorian Government to assist eligible families to cover the costs of school excursions, camps and sporting activities.

If you hold a valid means-tested concession card or support an out of home care student you may be eligible for CSEF. A special consideration category also exists for asylum seeker and refugee families. The allowance is paid directly to the school to use towards expenses relating to camps, excursions or sporting activities for the benefit of your child.

The annual CSEF amount per student is \$400 for all school students.

### HOW TO APPLY

New applicants should contact the school office to obtain a CSEF application form or download from the website below.

If you applied for CSEF at your child’s school last year, you do not need to complete an application form this year unless there has been a change in your family circumstances.

You only need to complete an application form if any of the following changes have occurred:

- **new student enrolments:** your child has started or changed schools this year.
- **changed family circumstances:** such as a change of custody, change of name, concession card number, or new siblings commencing this year.

Check with the school office if you are unsure.

## MORE INFORMATION

For more information about CSEF visit:

<https://www.vic.gov.au/camps-sports-and-excursions-fund>

